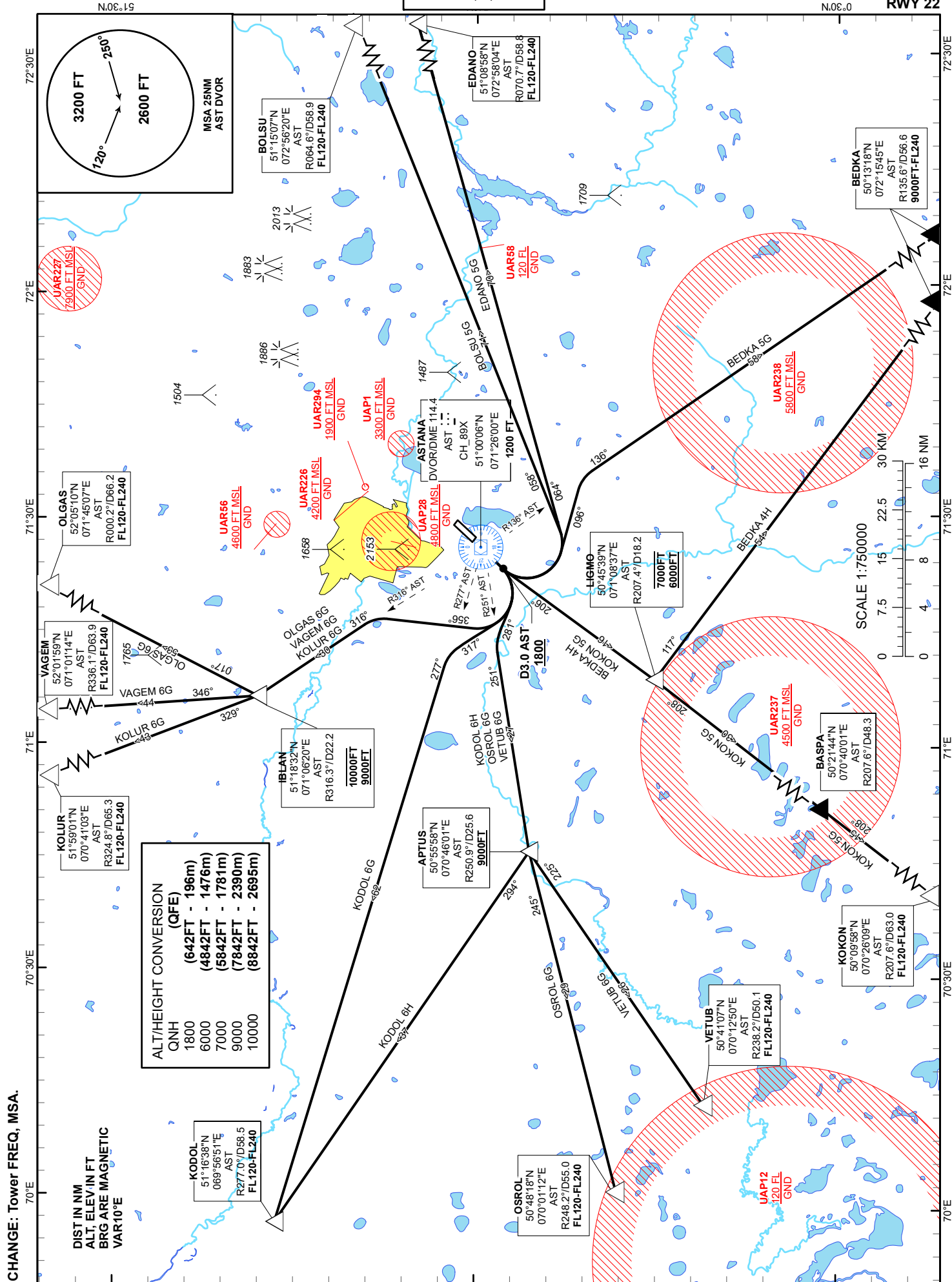


OLGAS 6G, BOLSU 5G, EDANO 5G,
BEDKA 5G, BEDKA 4H, KOKON 5G,
VETUB 6G, OSROL 6G, KODOL 6H,
KODOL 6G, KOLUR 6G, VAGEM 6G

ASTANA
NURSULTAN NAZARBAYEV
INTERNATIONAL AIRPORT
NOS 0 RWY 22



STANDARD DEPARTURE ROUTES - INSTRUMENT (SID) ASTANA RWY 22
VAGEM 6G After take-off climb straight ahead to 1800 or above, at 3.0NM outbound DME AST turn RIGHT on track 356° until intercept R316° AST, then proceed on track 316° to IBLAN (R316.3° D22.2 AST), after crossing IBLAN turn right on track 346° to VAGEM (R336.1° D63.9 AST). Cross IBLAN at 9000-10000. Cross VAGEM at FL120-FL240
EDANO 5G After take-off climb straight ahead to 1800 or above, at 3.0NM outbound DME AST turn LEFT on track 064° to EDANO (R070.7° D58.8 AST). Cross EDANO at FL120-FL240
BEDKA 5G After take-off climb straight ahead to 1800 or above, at 3.0NM outbound DME AST turn LEFT on track 096° until intercept R136° AST, then proceed on track 136° to BEDKA (R135.6° D56.6 AST). Cross BEDKA at 9000FT-FL240
BEDKA 4H After take-off climb straight ahead to 1800 or above, at 3.0NM outbound DME AST turn LEFT on track 206° to LIGMO (R207.4° D18.2 AST), after crossing LIGMO turn left on track 117° to BEDKA (R135.6° D56.6 AST). Cross LIGMO at 6000-7000. Cross BEDKA at 9000FT-FL240
OSROL 6G After take-off climb straight ahead to 1800 or above, at 3.0NM outbound DME AST turn RIGHT on track 281° until intercept R251° AST, then proceed on track 251° to APTUS (R250.9° D25.6 AST), after crossing APTUS turn left on track 245° to OSROL(R248.2° D55.0 AST). Cross APTUS at 9000 or above. Cross OSROL at FL120-FL240
VETUB 6G After take-off climb straight ahead to 1800 or above, at 3.0NM outbound DME AST turn RIGHT on track 281° until intercept R251° AST, then proceed on track 251° to APTUS (R250.9° D25.6 AST), after crossing APTUS turn left on track 225° to VETUB (R238.2° D50.1 AST). Cross APTUS at 9000 or above. Cross VETUB at FL120-FL240
KODOL 6G After take-off climb straight ahead to 1800 or above, at 3.0NM outbound DME AST turn RIGHT on track 317° until intercept R277° AST, then proceed on track 277° to KODOL (R277.0° D58.5 AST). Cross KODOL at FL120-FL240
KODOL 6H After take-off climb straight ahead to 1800 or above, at 3.0NM outbound DME AST turn RIGHT on track 281° until intercept R251° AST, then proceed on track 251° to APTUS (R250.9° D25.6 AST), after crossing APTUS turn right on track 294° to KODOL (R277.0° D58.5 AST). Cross APTUS at 9000 or above. Cross KODOL at FL120-FL240
KOKON 5G After take-off climb straight ahead to 1800 or above, at 3.0NM outbound DME AST turn LEFT on track 206° to LIGMO (R207.4° D18.2 AST), then proceed on track 208° BASPA (R207.6° D48.3 AST), after crossing BASPA proceed on track 208° to KOKON (R207.6° D63.0 AST). Cross LIGMO at 6000-7000. Cross KOKON at FL120-FL240
KOLUR 6G After take-off climb straight ahead to 1800 or above, at 3.0NM outbound DME AST turn RIGHT on track 356° until intercept R316° AST, then proceed on track 316° to IBLAN (R316.3° D22.2 AST), after crossing IBLAN turn right on track 329° to KOLUR (R324.8° D65.3 AST). Cross IBLAN at 9000-10000. Cross KOLUR at FL120-FL240
OLGAS 6G After take-off climb straight ahead to 1800 or above, at 3.0NM outbound DME AST turn RIGHT on track 356° until intercept R316° AST, then proceed on track 316° to IBLAN (R316.3° D22.2 AST), after crossing IBLAN turn right on track 017° to OLGAS (R000.2° D66.2 AST). Cross IBLAN at 9000-10000. Cross OLGAS at FL120-FL240
BOLSU 5G After take-off climb straight ahead to 1800 or above, at 3.0NM outbound DME AST turn LEFT on track 058° to BOLSU (R064.6° D58.9 AST). Cross BOLSU at FL120-FL240